



LTC 9488/00 Indoor Housing



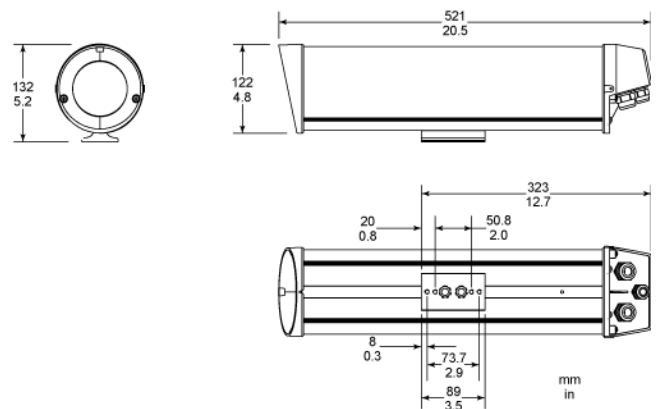
- ▶ For 1/4-inch, 1/3-inch & 1/2-inch CCD Cameras
- ▶ Feed-through Wiring Option
- ▶ Aluminum and Advanced Polymer Construction
- ▶ Easy Installation
- ▶ Full Camera Accessibility
- ▶ Available in Multiple Sizes

The LTC 9488 Series Housings are smartly styled housings for indoor use. These housings meet customers' demands for attractive housings that are both cost competitive and easy to install. They are available in multiple sizes to fit a wide range of cameras and lenses.

Functions

The design of these housings is unique. Removal of two captive screws is all that is necessary to slide off the cover and totally expose the camera and lens. This allows access to all camera and lens controls when the camera is in its mounted position. Power, video, and lens control cabling can be routed through liquid tight fittings in the bottom rear of the housing or can be routed through the mounting base. Feed-through mounts and J-mounts are available for these housings to completely hide the cabling. The base of the housings permits mounting to pan/tilts, adjustable heads, and various wall mounts.

Installation/Configuration Notes



LTC 9488/00 Indoor Housing

Parts Included

Quantity	Component
1	LTC 9488/00 Indoor Housing

Technical Specifications

Electrical

Model No.	Preinstalled Heater or Heater/Blower	Volt / Power V/W	Camera Models with These Voltage Ratings
Indoor Units			
LTC 9488/00	-	-	24 VAC 115 VAC 230 VAC

Mechanical

Maximum Camera and Lens:

LTC 9488/00 71 W x 71 H x 356 L mm (2.8 x 2.8 x 14.0 inch)

Cable Entry

9488/00

Three (3) liquid tight rear fittings, two (2) of which accept cable diameters from 4.3 mm to 11.9 mm (0.17 inch to 0.47 inch) and one (1) that accepts cable diameters from 4.6 mm to 7.9 mm (0.18 inch to 0.31 inch). Two (2) bottom feed-through liquid tight fittings accept cable diameters from 4.6 mm to 7.9 mm (0.18 inch to 0.31 inch).

Window	3 mm (0.12 inch) thick UV-stabilized polycarbonate.
Housing Mounting	Four (4) available 1/4-20 tapped holes. Only one set of two is required for mounting.
Camera Mounting	Removable camera bracket. Mounted with two screws.
Construction	Aluminum cover, aluminum base, aluminum mounting foot, polycarbonate faceplate, glass reinforced polycarbonate end caps, neoprene gasket, ethylene propylene seal, and all stainless steel hardware.
Finish	Dark mushroom
Dimensions	See drawings
Weight (approx.)	3.2 kg (7 lb)

Environmental

Salt Atmosphere	MIL-STD-810E, Method 509, Procedure 1.
Enclosure Protection	IP65, Designed to meet NEMA-4

Electromagnetic Compatibility

Safety	UL, cUL, CE
--------	-------------

Accessories

Sunshield	Provides protection from the direct rays of sun and promotes cooling to reduce internal housing temperatures.
LTC 9088/01	For LTC 9488 Series housings
LTC9080/00 Tamper Resistant Kit	Includes ten 10 screws and insertion tool to permit tamper resistance for five (5) housings.
LTC9215/00 Mount	Feed-through mount attached to the foot of housing for HSG 9483, LTC 9480 Series & LTC 9488 Series housings.

LTC 9215/00S Mount	Feed-through mount attached to the foot of housing for HSG 9483, LTC 9480 Series & LTC 9488 housings.
--------------------	---

LTC9219/01 J-mount	Feed-through J-mount allows housing to be mounted from ceiling.
--------------------	---

Suggested Applications:

	LTC 9488/00
Camera Model	Lens
LTC 0335	Fixed/Vari/ Zoom
LTC 0355	Fixed/Vari/ Zoom
LTC 0435	Fixed/Vari/ Zoom
LTC 0455	Fixed/Vari Zoom

Ordering Information

LTC 9488/00 Indoor Housing for camera/lens combination up to 356 mm (14-inch)	LTC9488/00
---	------------

Europe, Middle East, Africa:
Bosch Security Systems B.V.
P.O. Box 80002
5600 JB Eindhoven, The Netherlands
Phone: +31 40 2577 284
Fax: +31 40 2577 330
emea.securitysystems@bosch.com
www.boschsecurity.com

Americas:
Bosch Security Systems, Inc.
130 Perinton Parkway
Fairport, New York, 14450, USA
Phone: +1 800 289 0096
Fax: +1 585 223 9180
security.sales@us.bosch.com
www.boschsecurity.us

Asia-Pacific:
Bosch Security Systems Pte Ltd
38C Jalan Pemimpin
Singapore 577180
Phone: +65 6319 3450
Fax: +65 6319 3499
apr.securitysystems@bosch.com
www.boschsecurity.com

Represented by