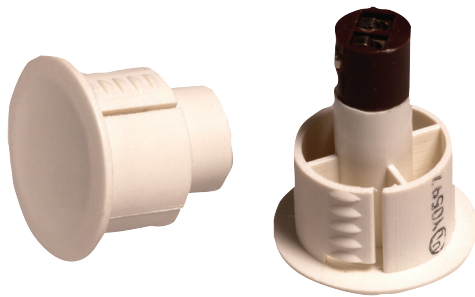


# ISN-CTC75 Terminal Connection Contacts (19 mm)

www.boschsecurity.com



**BOSCH**  
Invented for life



- ▶ Closed loop
- ▶ Terminal connection design
- ▶ Does not require soldering or splicing
- ▶ Steel door recess type

The contacts are available in brown or white. Both models use a compact magnet and are designed with a terminal connection for fast and easy installation. Use on steel doors in standard or tight-fitting applications.

## Certifications and approvals

UL and

Region	Certification
Europe	CE 73/23/EEC and 93/68/EEC, EN50131: 1997, EN50131-6: 1997, EN60950: 2000, EN60335-1: 1994 +A1: 1996 Annex B
USA	UL cULus: AMQV: Connectors and Switches (UL 634), AMQV7: Connectors and Switches Certified for Canada (ULC/ORD-C634)

## Installation/configuration notes

### Compatibility Information

All contact models are compatible with control panel models that accept contact inputs.

## Parts included

Quantity Per Package	Component
10	Contacts
10	Magnets

## Technical specifications

### Specifications for All Models

Gap Width:	25 mm (1 in.)
Contact Dimensions:	19 mm x 30 mm (0.75 in. x 1.18 in.)
Switch Configuration Type:	Single pole single throw (SPST)
Maximum Contact Resistance:	150 $\mu\Omega$ (micro-ohm)
Minimum Breakdown Voltage:	250 VDC
Insulation Resistance:	$10^{10} \Omega$
Electrostatic Cap:	0.3 PF
Contact Capacity:	10 VAC
Maximum Conductive Current:	1.0 A

Maximum Voltage:	100 V
Operating Temperature Range:	7.2°C to -95.56°C (-45°F to -140°F)

### Package Information

**ATTENTION!** Each package contains ten contacts and ten magnets.

### Ordering information

#### Brown Terminal Connection Contact

Brown recessed contact with 19 mm (0.75 in.) diameter. **Package contains ten contacts and ten magnets.**

Order number **ISN-CTC75-B**

#### White Terminal Connection Contact

White recessed contact with 19 mm (0.75 in.) diameter. **Package contains ten contacts and ten magnets.**

Order number **ISN-CTC75-W**

#### Represented by:

##### Americas:

Bosch Security Systems, Inc.  
130 Perinton Parkway  
Fairport, New York, 14450, USA  
Phone: +1 800 289 0096  
Fax: +1 585 223 9180  
security.sales@us.bosch.com  
www.boschsecurity.us

##### Europe, Middle East, Africa:

Bosch Security Systems B.V.  
P.O. Box 80002  
5617 BA Eindhoven, The Netherlands  
Phone: + 31 40 2577 284  
Fax: +31 40 2577 330  
emea.securitysystems@bosch.com  
www.boschsecurity.com

##### Asia-Pacific:

Robert Bosch (SEA) Pte Ltd, Security Systems  
11 Bishan Street 21  
Singapore 573943  
Phone: +65 6571 2808  
Fax: +65 6571 2699  
apr.securitysystems@bosch.com  
www.boschsecurity.asia

##### China:

Bosch (Shanghai) Security Systems Ltd.  
201 Building, No. 333 Fuquan Road  
North IBP  
Changning District, Shanghai  
200335 China  
Phone +86 21 22181111  
Fax: +86 21 22182398  
www.boschsecurity.com.cn

##### America Latina:

Robert Bosch Ltda Security Systems Division  
Via Anhanguera, Km 98  
CEP 13065-900  
Campinas, Sao Paulo, Brazil  
Phone: +55 19 2103 2860  
Fax: +55 19 2103 2862  
latam.boschsecurity@bosch.com  
www.boschsecurity.com