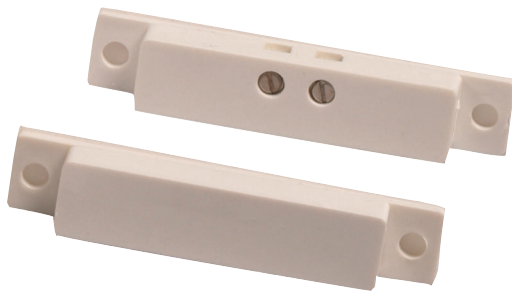


# ISN-C60 Slim Terminal Connection Contacts

www.boschsecurity.com



**BOSCH**  
Invented for life



- ▶ Closed loop
- ▶ Install with screws or with super adhesive
- ▶ Breakaway mounting holes for a tight fit
- ▶ Slim terminal connection design
- ▶ Includes deactivated rhodium reed switch

The contacts are available in brown or white. Both models have a slim design with breakaway mounting holes for tight-fitting applications. The terminal connection eliminates the need for 15.24 cm or 25.4 cm (6 in. or 10 in.) leads.

## Certifications and approvals

UL and

Region	Certification	
Europe	CE	73/23/EEC and 93/68/EEC, EN50131: 1997, EN50131-6: 1997, EN60950: 2000, EN60335-1: 1994 +A1: 1996 Annex B
USA	UL	cULus: AMQV: Connectors and Switches (UL 634), AMQV7: Connectors and Switches Certified for Canada (ULC/ORD-C634)

## Installation/configuration notes

### Compatibility Information

All contact models are compatible with control panel models that accept contact inputs.

## Parts included

Quantity Per Package	Component
10	Assemblies (contacts, screws, super adhesive, mounting holes, and tape covers)
10	Magnets

## Technical specifications

### Specifications for All Models

Gap Width:	19 mm (0.75 in.)
Contact Dimensions:	6.35 mm x 9.5 mm x 50.8 mm (0.25 in. x 0.375 in. x 2 in.)
Switch Configuration Type:	Single pole single throw (SPST)
Maximum Contact Resistance:	150 $\mu\Omega$ (micro-ohm)
Minimum Breakdown Voltage:	250 VDC
Insulation Resistance:	10 <sup>10</sup> $\Omega$
Electrostatic Cap:	0.3 PF
Contact Capacity:	10 VAC
Maximum Conductive Current:	1.0 A

Maximum Voltage:	100 V
Operating Temperature Range:	-40° C to 60° C (-40°F to -140°F)

### Package Information

**ATTENTION!** Each package contains ten assemblies with contacts, screws, super adhesive, mounting holes, tape covers, and ten magnets.

### Ordering information

#### Brown Slim Terminal Connection Contact

Brown surface mount contact. **Package contains ten assemblies with contacts, screws, super adhesive, mounting holes, tape covers, and ten magnets.**

Order number **ISN-C60-B**

#### White Slim Terminal Connection Contact

White surface mount contact. **Package contains ten assemblies with contacts, screws, super adhesive, mounting holes, tape covers, and ten magnets.**

Order number **ISN-C60-W**

#### Represented by:

##### Americas:

Bosch Security Systems, Inc.  
130 Perinton Parkway  
Fairport, New York, 14450, USA  
Phone: +1 800 289 0096  
Fax: +1 585 223 9180  
security.sales@us.bosch.com  
www.boschsecurity.us

##### Europe, Middle East, Africa:

Bosch Security Systems B.V.  
P.O. Box 80002  
5617 BA Eindhoven, The Netherlands  
Phone: + 31 40 2577 284  
Fax: +31 40 2577 330  
emea.securitysystems@bosch.com  
www.boschsecurity.com

##### Asia-Pacific:

Robert Bosch (SEA) Pte Ltd, Security Systems  
11 Bishan Street 21  
Singapore 573943  
Phone: +65 6571 2808  
Fax: +65 6571 2699  
apr.securitysystems@bosch.com  
www.boschsecurity.asia

##### China:

Bosch (Shanghai) Security Systems Ltd.  
201 Building, No. 333 Fuquan Road  
North IBP  
Changning District, Shanghai  
200335 China  
Phone +86 21 22181111  
Fax: +86 21 22182398  
www.boschsecurity.com.cn

##### America Latina:

Robert Bosch Ltda Security Systems Division  
Via Anhanguera, Km 98  
CEP 13065-900  
Campinas, Sao Paulo, Brazil  
Phone: +55 19 2103 2860  
Fax: +55 19 2103 2862  
latam.boschsecurity@bosch.com  
www.boschsecurity.com