

VRK Series Vandal Resistant Door Entry Systems

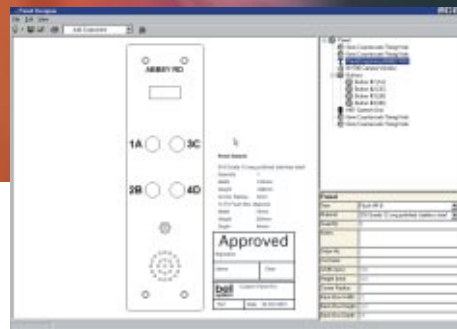
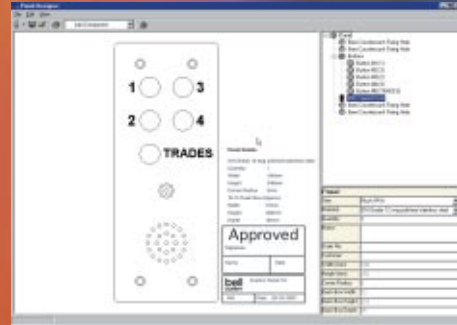


Above: Model VRK4

Below: Model VRK7 + TRVRK



The VRK Vandal Resistant Systems have been devised for areas that are prone to external vandalism. Each system provides all of the components necessary to install a complete audio door entry system; including a surface lock release as standard. These systems are available from a one way (model VRK1) up to any size.



Each VRK series system comprises of:

- model 801 telephone, one for each station
- model VRP front door panel
- model 61 speech unit
- model 203 surface lock release
- model 212 12VAC PSU (model 225 above 10 stations)
- Full wiring and installation instructions

The model VRP panels are manufactured from 2.5 mm 316 marine grade stainless steel. All panels are flush mounted and fixed to the back-box by tamper proof bolts (a special key is required to remove the panel). A single model B24S stainless steel vandal resistant button is provided for each flat and optionally one for Tradesmen.

For technical specifications and wiring diagrams please use the faxback form on page 40 or visit our website at: www.bellsystem.co.uk

Each panel is custom engraved to client's specifications using the **Panel Designer** software (shown above), which creates a dimensioned drawing of the panel for customer approval prior to manufacture. The engraving of flat numbers is included in the price of each system. Further engraving (e.g. Block names) can be included for a modest surcharge.

The model 801 telephones are included as standard for systems up to 20 stations and the model 801P for larger systems.

Ordering Information:

Order a model VRK1 for a complete single station system. For multi-way systems order a model VRK n, where n is the number of stations e.g. a model VRK14 is a complete 14 station system. For surface systems add -S to the order code e.g. VRK14-S

For tradesmen entry facility, simply add TRVRK to any given system e.g. a six station system with trades facility is a model VRK6 + TRVRK (A model TS2000 time clock is included).

Please note the consideration to coastal locations as indicated on page 12.