

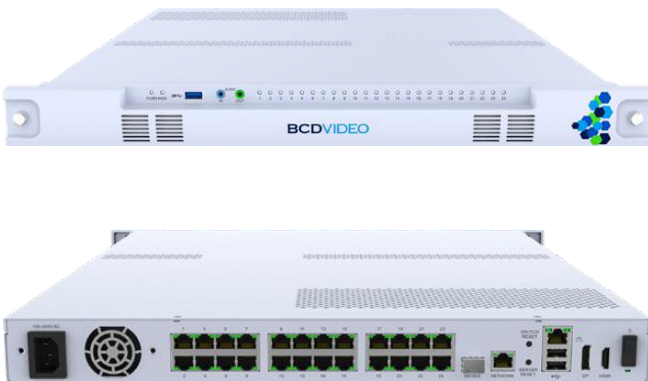
NVRBCD-24

BCD, Intel® Core™ Processors (KabyLake-S), Cyber Hardened 1U Rackmount Appliance









PRODUCT OVERVIEW

NVRBCD-24 is a surveillance appliance with compact design, integrated a scalable managed switch with PoE + support, powered by Intel® 7th Gen Core™ I7 CPU and provides up to 4x3.5" swappable HDD tray for sufficient storage. Featuring PoE management software and TPM 2.0 functionality, NVRBCD-24 allows users to build a secured NVR (Network Video Recorder) application at the edge fast and easily.

All appliances are built in-house in BCD's secure facilities. BCD's operations have been assessed by DQS Inc, who certified that we meet the ISO 9001:2015 standard of maintaining a Quality Management System.



KEY FEATURES

-  **DDR4-2400 16GB non-ECC memory, max. 32GB**
-  **Intel® 7th Gen Core™ i7-7700 processors**
-  **Onboard 24 PoE LAN ports**
-  **Four swappable HDD tray**
-  **Internal power supply 12V20A /53V5.28A for PoE**
-  **RAID Options: 0, 1, 5, 10**
-  **Cyber Hardened Video Appliance**
-  **20 Harmonize RMM Licenses**

NVRBCD-24

BCD, Intel® Core™ Processors (KabyLake-S), Cyber Hardened 1U Rackmount Appliance

SPECIFICATIONS

Main Board

NVRBCD-8
Intel® 7th Gen Core™ i7-7700 processors On board TPM 2.0

Main Memory

(2) x 8GB DDR4-2400 non-ECC memory, max. 32GB

LAN Features

24 x 10/100M Ethernet ports support PoE+ (max. 30W/port)
Support 10/100/1000M ingress between CPU and switch
260W Power Budget @30W POE+ per port

I/O Interface-Front

Power status/HDD status/LAN status LEDs
1 x USB 3.0 port
4 x 3.5" swappable HDD tray

I/O Interface-Rear

1 x HDMI port
1 x DP port
1 x Power button switch
2 x USB 3.0 ports
1 x RJ45 Management port
1 x RJ45 (10/100/1000M)
1 x SFP (1000M)
24 x 10/100M 802.3at PoE port

OS

Windows 10 IoT, can be upgraded to Windows Server 2019 or Server 2022

Storage

1 x SATA M.2 2242/2280 Key M slot, 256GB
4 x 3.5" HDD swappable bay support Software RAID 0,1,5,10

Power Input

Internal power supply 12V20A /53V5.28A for PoE

Dimensions

Chassis dimension: 486mm x 483mm x 44mm
Carton dimension: 775mm x 576mm x 221mm

Weight

Without packing: 14 kg
With packing: 17.5 kg

Environment

Operating temperature: 0°C ~ 40°C
Storage temperature: -40°C ~ 80°C
Relative Humidity: 10% ~ 90% non-condensing

Certifications

CE
FCC Class A
UL

ORDERING INFORMATION

Barebone

NVRBCD-24 (P/N: TBC)

Supports Intel® 7th Gen Core™ i7-7700 processors, 2 DDR4 memory slots, 24 10/100 PoE LAN ports, M.2 socket, USB ports, HDMI/DP port, 4 swappable 3.5" HDD bays