

## AXIS 243Q Blade Video Server / AXIS 291 1U Video Server Rack

Full frame rate, high-density video encoder rack solution.



- > Full frame rate
- > High-density solution
- > High-quality, de-interlaced video
- > Simultaneous MPEG-4 and Motion JPEG
- > Video motion detection and pre-/post-alarm buffer
- > Support for PTZ and dome cameras

AXIS 291 1U Video Server Rack is a high-density solution for seamless and professional installation of video encoders. Together with the AXIS 243Q Blade Video Server, it is designed to migrate analog systems to high performance, IP-based, digital solutions.

The powerful combination of AXIS 243Q and AXIS 291 1U offers full frame rate at up to 4CIF resolutions on all channels simultaneously.

Analog video is converted to high-quality, de-interlaced, digital video.

Simultaneous Motion JPEG and MPEG-4 for optimized quality and bandwidth.

The event management capabilities ensure efficient use of the cameras in the network video system. This includes video motion detection, active tampering alarm, and alarm buffering.

The video server enables pan/tilt/zoom control over the network of all leading brands of analog video cameras on the market.



## Technical specifications – AXIS 243Q Blade Video Server / 291 1U Video Server Rack

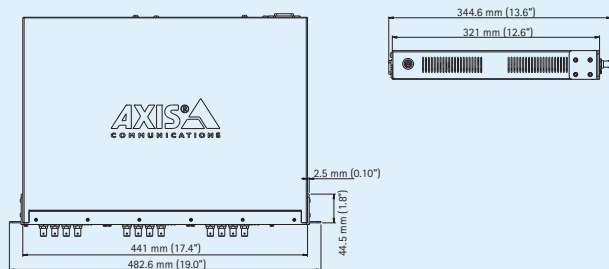
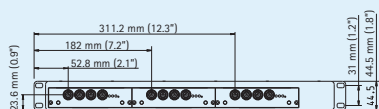
Video server	
<b>Models</b>	AXIS 243Q Blade Video Server Requires the AXIS 201 1U Video Server Rack or the AXIS Q7900 Rack
<b>Video compression</b>	MPEG-4 Part 2 (ISO/IEC 14496-2) Motion JPEG
<b>Resolutions</b>	704x576 to 160x120
<b>Frame rate MPEG-4</b>	Up to 30/25 (NTSC/PAL) per channel in all resolutions
<b>Frame rate Motion JPEG</b>	Up to 30/25 (NTSC/PAL) per channel in all resolutions
<b>Video streaming</b>	Simultaneous MPEG-4 and Motion JPEG Controllable frame rate and bandwidth VBR/CBR MPEG-4
<b>Image settings</b>	Compression, color Rotation: 90°, 180°, 270° Aspect ratio correction Text and image overlay Privacy mask Deinterlace filter
Network	
<b>Security</b>	Password protection, IP address filtering, HTTPS encryption, IEEE 802.1X network access control
<b>Supported protocols</b>	IPv4/v6, HTTP, HTTPS, QoS layer 3 DiffServ, FTP, SMTP, Bonjour, UPnP, SNMPv1/v2c/v3(MIB-II), DNS, DynDNS, NTP, RTSP, RTP, TCP, UDP, IGMP, RTCP, ICMP, DHCP, ARP, SOCKS
System integration	
<b>Application Programming Interface</b>	Open API for software integration, including VAPIX® from Axis Communications available at <a href="http://www.axis.com">www.axis.com</a>
<b>Intelligent video</b>	Video motion detection, active tampering alarm
<b>Alarm triggers</b>	Intelligent video, external inputs, video loss, on boot, PTZ preset
<b>Alarm events</b>	File upload via FTP, HTTP and email Notification via email, HTTP and TCP External output activation
<b>Video buffer</b>	9 MB pre- and post-alarm per channel
<b>Pan/Tilt/Zoom</b>	Wide range of analog PTZ cameras supported (drivers available for download at <a href="http://www.axis.com">www.axis.com</a> ) 20 presets/camera, guard tour, PTZ control queue Supports Windows compatible joysticks

General	
<b>Processor and memory</b>	4x ETRAX 100LX, 4x ARTPEC-2, 4x 32 MB RAM, 4x 8 MB Flash
<b>Power</b>	Powered from AXIS 291 1U Video Server Rack
<b>Connectors</b>	4 analog composite video BNC input, NTSC/PAL auto-sensing RJ-45 10BASE-T/100BASE-TX Terminal block for 4 inputs, 4 outputs and RS-485 half duplex
<b>Operating conditions</b>	0 – 45 °C 32 – 113 °F Humidity 20 – 80% RH (non-condensing)
<b>Approvals</b>	EN 61000-6-1, EN 61000-6-2, EN 55024, EN 55022 Class B, EN 61000-3-2, EN 61000-3-3, FCC Part 15 Subpart B Class B, AS/NZS CISPR 22, ICES-003, VCCI Class B, ITE EN 60950-1
<b>Weight</b>	270 g (0.6 lbs)
<b>Included accessories</b>	Installation Guide, CD with installation and management tools, software and User's Manual, 1 Windows decoder user license

291 1U Video Server Rack	
<b>Expansion slots</b>	3 slots for Axis blade video servers
<b>Casing</b>	Metal casing for standalone or rack mounting
<b>Power</b>	100 – 240 V AC, 1.9 A max 80 W (with 3x243Q)
<b>Connectors</b>	Ethernet 10BASE-T/100BASE-TX/1000BASE-T, RJ-45 (Gigabit Ethernet) 3 terminal blocks: 4 alarm inputs 4 outputs RS-485/422 half-duplex
<b>Operating conditions</b>	0 – 45 °C (32 – 113 °F) Humidity 20 – 80% RH (non-condensing)
<b>Approvals</b>	EN 55022 Class B, EN 61000-3-2, EN 61000-3-3, EN 55024, EN 61000-6-1, EN 61000-6-2, FCC Part 15 Subpart B Class B, VCCI Class B, AS/NZ CISPR 22, ICES-003, ITE, UL, cUL, EN 60950-1, CB-certificate, KTL
<b>Weight</b>	3.7 kg (8.2 lbs) excluding blades
<b>Included accessories</b>	Installation Guide, mounting kit, AC power cable

More information is available at [www.axis.com](http://www.axis.com)

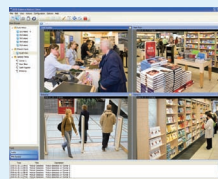
### Dimensions



### Optional accessories



AXIS 295  
Video Surveillance Joystick



For information on AXIS Camera Station and video management software from Axis' Application Development Partners, see [www.axis.com/products/video/software/](http://www.axis.com/products/video/software/)