

AV2256/AV3256

1080p or 3-Megapixel WDR H.264 Day/Night IP MegaDome® 2 Camera

Arecont Vision
megapixel technology...
beyond imagination

AV2256 Series

1080p Day/Night Remote Focus, Remote Zoom, P-Iris

AV2256PM	1080p MD2 WDR Base Model
AV2256PMIR	1080p MD2 WDR w/IR LEDs

AV3256 Series

3MP Day/Night Remote Focus, Remote Zoom, P-Iris

AV3256PM	3MP MD2 WDR Base Model
AV3256PM-A	3MP MD2 WDR w/Audio
AV3256PMIR	3MP MD2 WDR w/IR LEDs
AV3256PMIR-A	3MP MD2 WDR w/IR LEDs and Audio



The **True Wide Dynamic Range** Camera

WDR up to **100dB** Allowing Users to
See Clearly in Shaded and Bright Light
Conditions Simultaneously

P-Iris Lens to Precisely Control Iris
Position and Get **Best Depth of Field**
and **Image Clarity**

Arecont Vision Advantages:

- All-in-One H.264 MegaDome Solution
- Remote Focus, Remote Zoom and P-Iris Lens
- The Fastest Frame Rates on the Market
- PSIA and ONVIF Conformant
- Total PoE Solution to Power Camera, IR LEDs and Fan (No Auxiliary Power Required)
- Binning Mode Improves Low-Light Performance in 3MP Versions
- New User-Friendly Webpage
- Dual Encoder H.264/MJPEG
- Privacy Mask, Motion Detection, Flexible Cropping and Forensic Zooming
- IP66 and Vandal-Resistant Dome, IK-10 Rated
- Optional Audio and IR LEDs
- True Day/Night Functionality with Removeable IR Cut Filter
- Easily Adjustable 3-Axis Gimbal



Specification sheets subject to change without notice.

Made in the USA



Model Numbers

AV2256PM	1080p MD2 WDR Base Model
AV2256PMIR	1080p MD2 WDR w/IR LEDs
AV3256PM	3MP MD2 WDR Base Model
AV3256PM-A	3MP MD2 WDR w/Audio
AV3256PMIR	3MP MD2 WDR w/IR LEDs
AV3256PMIR-A	3MP MD2 WDR w/IR LEDs and Audio

Imaging

- 2.07-megapixel effective CMOS image sensor (AV2256)
- 3-megapixel CMOS image sensor (AV3256)
- 1/3.2" optical format
- 2.2 μ m pixel pitch
- Progressive Scan
- Minimum illumination of:
 - Color (non-binning): 0.3 Lux @ F1.2
 - Color (binning): 0.15 Lux @ F1.2
 - Day/Night: 0 Lux, IR sensitive
- Wide Dynamic Range up to 100 dB
- Maximum SNR 49 dB

Full Field-of-View (FOV) Resolution

Mode Numbers	Full FOV Resolution	1/4 Resolution
AV2256	1080p 1920 (H) x 1080 (V)	960 (H) x 540 (V)
AV3256	3MP 2048 (H) x 1536 (V)	1024 (H) x 768 (V)

Cropped (FOV) Resolution

Flexible Cropping - Crop to 2 pixels in H.264 and 1 pixel in JPEG

- 1920x1200 WUXG (AV3256)
- 1920x1080 HDTV - 1080p (AV3256)
- 1600x1200 2MP (AV3256)
- 1280x1024 1.3MP
- 1280x720 HDTV - 720p
- 640x480 VGA

Lens

- 3–9mm, F1.2, remote focus, zoom and P-iris lens
- HFOV = 81°–27° (AV2256)/87°–29° (AV3256)

Data Transmission

- Video frame rate up to:
 - 21fps @ 2048x1536 (AV3256)
 - 31fps @ 1600x1200 (AV3256)
 - 30fps @ 1920x1080
 - 41fps @ 1280x1024
- Video frame in binning mode up to:
 - 21fps @ 1024x768 (AV3256)
 - 27fps @ 800x600 (AV3256)
 - 31fps @ 960x540 (AV3256)
 - 32fps @ 640x512 (AV3256)
- Compression type
 - H.264 (MPEG-4, Part 10)/Motion JPEG
 - 21 levels of quality
- TFTP, HTTP, RTSP, RTP/TCP, RTP/UDP image transmission protocols
- 100Base-T Ethernet Network Interface
- Multi-streaming: 8 non-identical streams

Audio (-A models only)

- Streaming: Two-way
- Compression: G.711PCM 8kHz
- Input/output: External microphone input or line input/line output

IR Illuminator (-IR models only)

- 24pcs 850nm LEDs/15 meter IR distance (max)/40° IR angle
- No external power required

Industry Standard

- PSIA and ONVIF Conformant

Compliance

- Class A FCC, Part 15; EN55022 Class A, EN55024, EN61000-3-2, EN61000-3-3, EN60950-1 RoHS, REACH, IK-10 (EN62262), IP66 (EN60529)
- CE Mark, UL Listed

Programmability

- Auto adjustment between LDR and WDR modes
- Remote focus, remote zoom and P-iris control
- Binning Mode (AV3256)
- Flexible cropping
- Low-light noise filter control
- Bit rate and bandwidth limit control
- Shutter speed: 1ms–500ms
- Backlight compensation
- Auto multi-matrix white balance
- On-camera motion detection and privacy mask with up to 1024 detection zones
- 50/60Hz selectable flicker control
- Electronic pan, tilt, zoom (PTZ) and image flip—180° rotation
- MoonLight™ Mode: extended exposure and noise cancellation
- Programmable resolution, brightness, saturation, gamma, sharpness, tint

Environmental

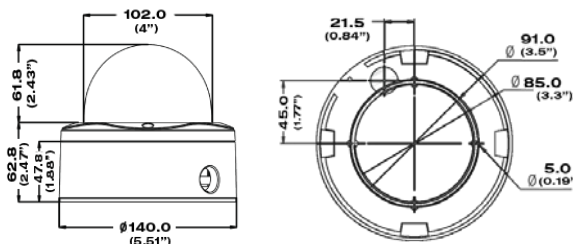
- Operating temperature:
 - -40°C (-40°F) to +50°C (122°F)
 - Stable image temperature: 0°C (32°F) to +50°C (122°F)
- Storage temperature: -40°C (-40°F) to 60°C (140°F)
- Humidity 0% to 90% (non condensing)

Electrical

- General purpose opto-coupled input and output
- Power over Ethernet (PoE): PoE 802.3af Class 3 for camera, IR LEDs and Fan
- Auxiliary power 12–48V DC, 24V AC
- Power consumption:
 - 10.7 Watts (base model/-A model)
 - 12.6 Watts (-IR model/-IR-A model)

Mechanical

- Casing
 - Die-casting aluminum chassis with 4" polycarbonate dome bubble
 - IP66 rated for dust and water ingress
 - Vandal-resistant, IK-10 protection rating
- Easily adjustable 3-axis camera gimbal w/360° pan, 90° tilt and 360° z-axis
- Total unit dimensions:
 - \varnothing 5.5" x 4.9" (H), bubble only: \varnothing 4.0" x 2.4" (H)
 - \varnothing 140.3mm x 124.6mm (H), bubble only: \varnothing 102mm x 61.8mm (H)
 - 2.25lbs (1.02kg)

**Accessories**

- MD-WMT2: Wall Mount w/1.5" NPT
- MD-CAP: Wall Mount Cap Only w/1.5" NPT
- MD-CMT: Pendant Mount
- MD-CRMA: Corner Mount Adapter
- MD-PMA: Pole Mount Adapter
- MD-FMA: Flush Mount Adapter
- SV-EBA: Electrical Box Adapter
- SV-JBA: Junction Box Adapter (for on-site installation)