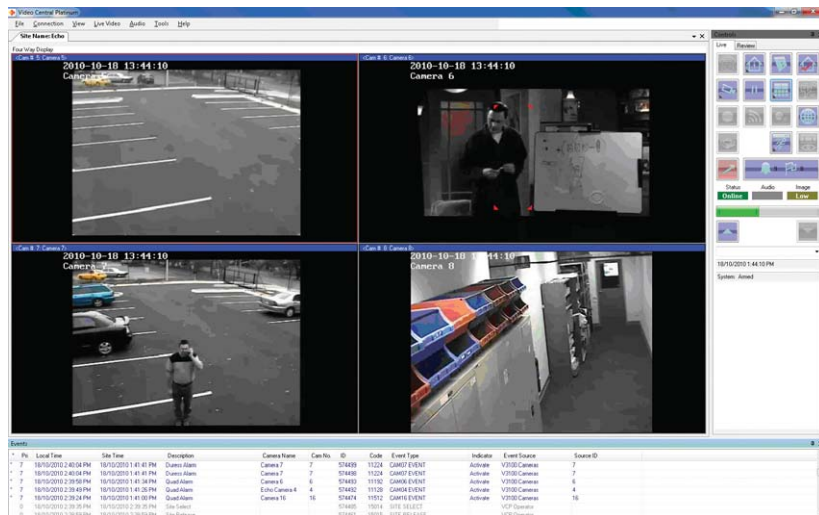


# ADPRO® VideoCentral Platinum



ADPRO VideoCentral Platinum by Xtralis is a multi-site video security management software application specifically designed to monitor video and audio from remote sites fitted with ADPRO video transmission systems.

ADPRO VideoCentral Platinum software is a single version product that will support multiple PCs and operators. It is ideal for either Central Monitoring Station (CMS) and command centre applications or for a single operator or laptop user who requires only periodic viewing or monitoring of a site.

## Video Alarm Verification

ADPRO VideoCentral is widely used for video alarm and event verification of remote site alarms. Alarms cause the ADPRO remote video transmitters and recorders to connect to ADPRO VideoCentral and send video images of the alarm events. High priority events such as panic, duress or armed holdup can be viewed in real-time.

Site owners can use ADPRO VideoCentral on a PC or laptop to remotely view video or assess an appropriate response, eliminating needless visits by site owners or security patrols.

## Interactive Monitoring

Typical applications include remote monitoring of staff, stock and general site activity. Interactive, user definable maps enable an operator to call and control sites directly from a map or site layout.

## ADPRO VideoWall by Xtralis Surveillance Module

ADPRO VideoWall module provides video surveillance capability across all ADPRO transmitters including ADPRO FastTrace / ADPRO FastTx / ADPRO FastVu / ADPRO FastScan and ADPRO FastTrace 2 Hybrid / ADPRO FastTrace 2 Hybrid Tx / ADPRO FastTrace 2 Lite. Integration between ADPRO VideoCentral and ADPRO VideoWall delivers seamless operation.

## Audio

Integrated listening ability assists the alarm verification process, while transmission of the operator's voice to the site provides instant intruder control.

## Video Hard Disk Recording and Printing

Alarm video is automatically saved to hard disk for later recall and image printing.

## Supported Products

ADPRO VideoCentral Platinum is used to monitor ADPRO FastTrace 2 Hybrid and other ADPRO remote video recording and transmission devices via software compatibility mode.

## Key Features

- Video verification of remote alarm events.
- Monitor multiple remote sites across a network.
- Expandable from a single to multiple operator control room.
- Fast display, storage and retrieval of alarm images.
- Carry out virtual guard tours of remote sites.
- Listen or talk to a remote site.
- Individual user access control.
- Control devices such as lights, gates or barriers at remote sites.
- Remotely control PTZ cameras for monitoring or surveillance.
- Control sites from a User Interface or Interactive Maps.
- Database search to recall and display all previous events.
- Automatic operator notification of the absence of site communications.
- Easy to use icons, pull-down menus and wizards for control and administration.
- Remote setup of on-site equipment.
- Database storage of site information with backups and immediate retrieval options.
- Integrated Reporting.
- ADPRO VideoWall module provides outstanding surveillance capability.
- Direct link to ADPRO VideoCentral Gold search
- ADPRO Video Central Platinum utilises Industry Standard Microsoft SQL database which provides standard management and expansion capabilities.
- ADPRO VideoCentral Platinum Lite version for the installer - commissioning tool for single installation, including alarm handling and reporting
- Ability to save live video/audio with operator activity provides management with an audit trail.

# ADPRO® VideoCentral Platinum

## System Configuration

### Single PC

This configuration is typically used by:

- A site owner for self-assessment and surveillance.
- A CMS with a few sites.

### Multi PC Systems

Typically used in a monitoring station with multiple concurrent users monitoring multiple sites.

## PC Specifications

### Recommended Requirements for Multi PC System - Server/Database

- Intel Quad Core or better
- Minimum speed - 2.6 GHz
- Main Memory - 4 GB
- HDD 150 GB (SCSI or SATA, 10,000 rpm minimum)
- HDD 1 TB for backup and archives (7,200 rpm minimum)
- 1000 Base T Network card
- 1000 Base T Network Backbone ( when Video Wall used)

### Video Card / Monitor

- Nvidia GForce 8 or 9 series 512 MB
- 1024 x 768 pixel resolution
- Dual display for Interactive Maps

### Minimum Requirements for Single User or Client

- Intel Quad Core or better
- Minimum speed - 2.4 GHz
- Main Memory - 4 GB
- HD 320 GB (7,200 rpm minimum)
- 1000 Base T Network card

### Video Card / Monitor

- Nvidia GForce 9 series 512 MB or better
- 1024 x 768 pixel resolution
- Dual display for Interactive Maps

### Minimum Requirements for the Video Wall PC

- Intel Quad Core or better
- Minimum speed - 2.6 GHz
- Main Memory - 4 GB
- HD 320 GB (7,200 rpm minimum)
- 1000 Base T Network card
- 1000 Base T Network Backbone

### Video Card / Monitor

- Nvidia GForce 9 series 512 MB or better
- 1024 x 768 pixel resolution

*Note: The HDD configuration needs to be in accordance with the CMS activity. Please refer to the manual for further detailed information.*

[www.xtralis.com](http://www.xtralis.com)

**The Americas** +1 781 740 2223 **Asia** +852 2916 8894 **Australia and New Zealand** +61 3 9936 7000  
**Continental Europe** +32 56 24 19 51 **UK and the Middle East** +44 1442 242 330

The contents of this document are provided on an "as is" basis. No representation or warranty (either express or implied) is made as to the completeness, accuracy or reliability of the contents of this document. The manufacturer reserves the right to change designs or specifications without obligation and without further notice. Except as otherwise provided, all warranties, express or implied, including without limitation any implied warranties of merchantability and fitness for a particular purpose are expressly excluded.

This document includes registered and unregistered trademarks. All trademarks displayed are the trademarks of their respective owners. Your use of this document does not constitute or create a licence or any other right to use the name and/or trademark and/or label.

This document is subject to copyright owned by Xtralis AG ("Xtralis"). You agree not to copy, communicate to the public, adapt, distribute, transfer, sell, modify or publish any contents of this document without the express prior written consent of Xtralis.

Doc. no. 14976\_03

## Peripherals/System Requirements

### DVD-ROM

Industry standard device (10 x speed or greater).

### Mouse/Keyboard

Windows compatible recommended.

### Sound Card/Speakers/Microphone

Required if audio capability is to be used.

### Communication Devices

Network connectivity via a LAN adaptor supporting 100BaseT or 1000BaseT.

### Operating System

*Recommend:*

- Windows® XP Professional 32 bit (SP3)
- Microsoft Server 2003 (SP2),
- Windows 7 Professional 32bit
- Internet Explorer V7 or greater.

*Supported (not for VCG/legacy products):*

- VISTA Business 32bit (SP2)

### Ordering Information

Model No: VCPSW-1 (software key)

Model No: VCPSW-1-USB (USB dongle)

*Note: For connection to legacy products (ADPRO FastTrace, ADPRO FastVu and ADPRO FastScan), please refer to the specifications in the ADPRO VideoCentral Gold datasheet.*

**ADPRO®**  
by  **xtralis™**